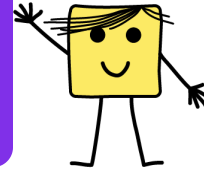


Mots irréguliers n°1



Relie les mots aux Kikubes

monsieur



ville

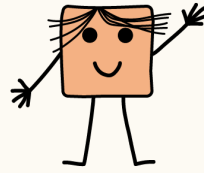


blanc

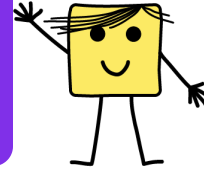


six





Mots irréguliers n°1



six



hiver

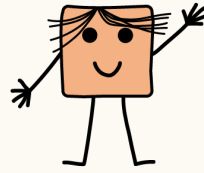


monsieur

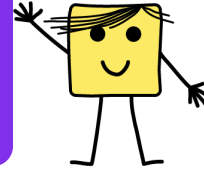


vingt





Mots irréguliers
n°1



sept



vingt



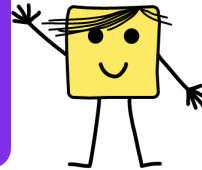
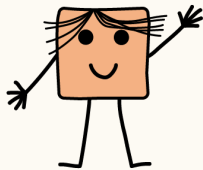
huit



hiver



Mots irréguliers
n°1



blanc



huit



ville



sept



hiver



ville



sept



monsieur



blanc



vingt

